

# To let



58 Brassey Road, Winchester, Hampshire, SO22 6SB



4 bedroom semi-detached property  
Spacious sitting and dining areas

Situated on the outskirts of  
Winchester

4 double bedrooms with ensembles  
Excellent location for rail travel to  
London and Southampton

Garage and off road parking  
available

£1,700

P1225

The Old Dairy, Sutton Scotney, Winchester, Hampshire SO21 3NZ  
T 01962 763900; f 01962 763901; lettings@bcm.co.uk; www.bcm.co.uk

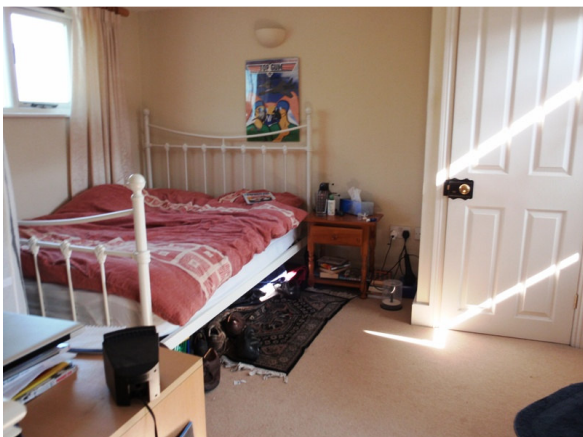
A lovely 4 bedroom semi-detached property on the outskirts of the City of Winchester.

This property comprises entrance hall with good sized dining room, kitchen/diner and sitting room, all with wooden flooring, leading out to the back of the property where there is a small patio area. There is also a garage to the side of the property and off road parking.

The first floor has three double bedrooms with lockable doors and ensuite shower rooms. The second floor has a further double bedroom with a WC and bath.

The property is in an excellent location for rail travel to London and Southampton.

Ideal for sharers. Gas central heating.



From Winchester take Andover Road over the rail bridge and take the first left turning. Then take the first left turning again and the property is half way down the road on your left hand side.