

# FOR RENT

---



## 4 BASING BARN S

Sages Lane, Privett  
Hampshire, GU34 3QA

---

£1,300 per calendar month

---



### THE PROPERTY

An impressive 3 bedroom barn conversion, neutrally decorated and offering spacious family accommodation. It is surrounded by delightful communal gardens which are maintained by the estate and idyllic countryside.

The property comprises a large entrance hall, good sized family kitchen with double oven and hob and space for a dishwasher, washing machine and fridge/freezer, and French doors to the front of the property. Very spacious and impressive light and airy sitting room, with sufficient space for a dining area and two sets of french doors to the communal gardens. Good sized bedroom and w.c. and shower. Leading from two separate staircases are 2 double bedrooms. The main bedroom has a bathroom alongside with a bath and separate shower.

No 4 Basing Barns is within easy reach of Petersfield, Alton and Winchester, all with mainline stations to London. There are excellent schools for all ages nearby with a Montessori nursery school in the village. Privett is a popular village and the development is surrounded by idyllic countryside which is mainly designated as an Area of Outstanding Natural Beauty.

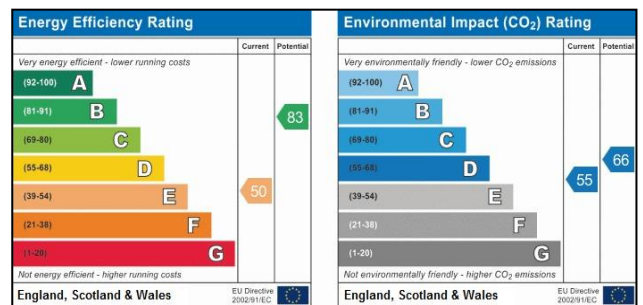
2 allocated parking spaces

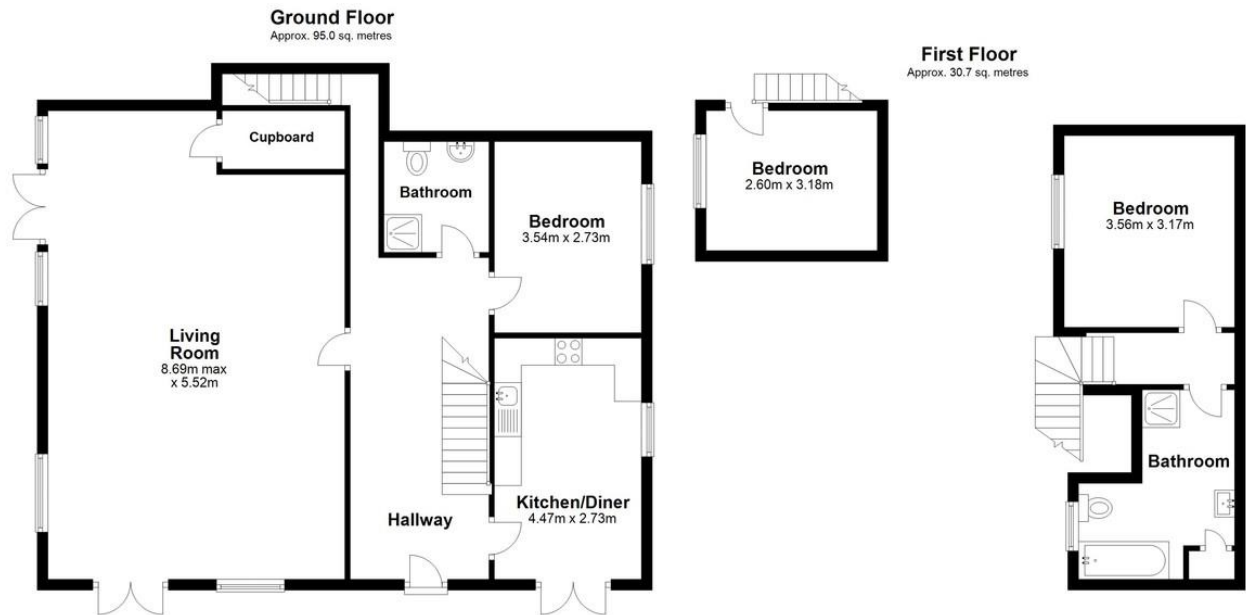
### ADDITIONAL INFORMATION

EPC Rating: E  
 Local Authority: East Hampshire District Council  
 Council Tax Band: E  
 Monthly Sewerage Charge: £15  
 No Pets

### DIRECTIONS

Continue along the A272 until the traffic lights and cross roads at West Meon. Turn north towards Alton on the A32. Immediately after the Angel Inn on the left hand side, turn right at the crossroads into Sages Lane. Turn immediately left as directed towards Basing Barns.





Total area: approx. 125.7 sq. metres  
**4 Basing Barns, Sages Lane, Privett, Alton**

**WINCHESTER**

BCM, The Old Diary, Winchester Hill, Sutton Scotney,  
 Winchester, Hampshire SO21 3NZ, UK

T 01962 763 900 E lettings@bcm.co.uk

**ISLE OF WIGHT**

BCM, Willow Barn, Long Lane,  
 Newport, Isle of Wight PO30 2NW, UK

T 01983 828 800 E iow@bcm.co.uk

**OXFORD**

BCM, Ouseley Barn Farm, Ipsden,  
 Wallingford, Oxfordshire, OX10 6AR, UK

T 01865 817 105 E oxford@bcm.co.uk