



## 12 BASING BARNS

Sages Lane, Privett, Hampshire GU34 3QA

TO LET

£1,800 pcm



# 12 BASING BARNES

Sages Lane, Privett, Hampshire, GU34 3QA

Winchester 14 miles | Alresford 8 miles | Petersfield 8 miles | London Waterloo from  
Petersfield Station – 1.5 hours | Mileages and times approximate

## 4 bedrooms

An outstanding barn conversion which offers excellent living accommodation, much character and overlooks idyllic countryside.

### THE PROPERTY

An outstanding four-bedroom barn conversion which offers excellent living accommodation, much character and overlooks idyllic countryside.

It comprises large entrance hall with storage and hanging cupboard, cloakroom and study. There is a good-sized family kitchen with ample space to seat 8, space for white goods, French doors to front courtyard and utility room. Double glass doors lead to the very spacious, light and airy sitting room, with sufficient space for a dining area and French doors to the communal lawned gardens.

Upstairs comprises good sized landing with excellent storage cupboards. The large master bedroom with its outstanding views from ceiling height French doors opens onto a small balcony, it also benefits from a dressing area and ensuite bathroom/shower room. There is a further very large double bedroom with dressing area, another double bedroom and a single bedroom with cupboard, a family bathroom/shower room. The development is set in landscaped formal courtyards with communal lawns. There are two allocated parking spaces.

### ADDITIONAL INFORMATION

#### Services

Mains water. Private sewerage, £15.00 per month. Electric heating.

#### Local Authority

East Hampshire District Council. Tax band F

#### EPC

D 61

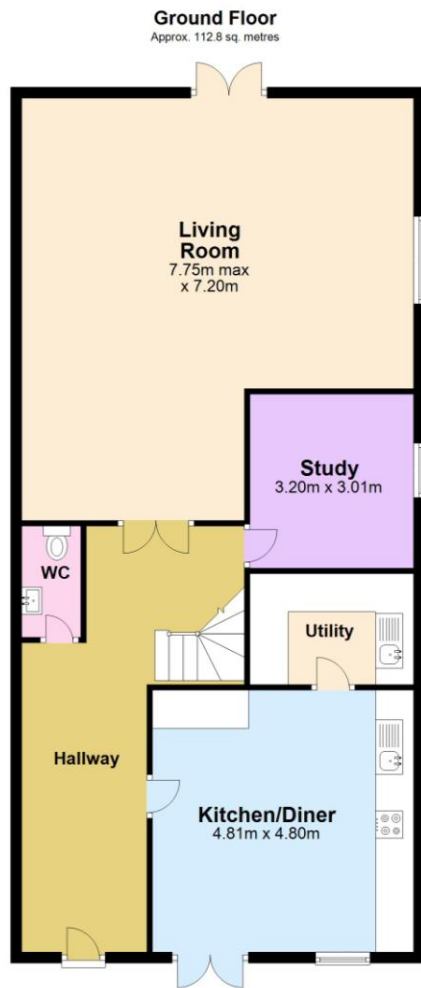
#### Deposit

£2,076.00

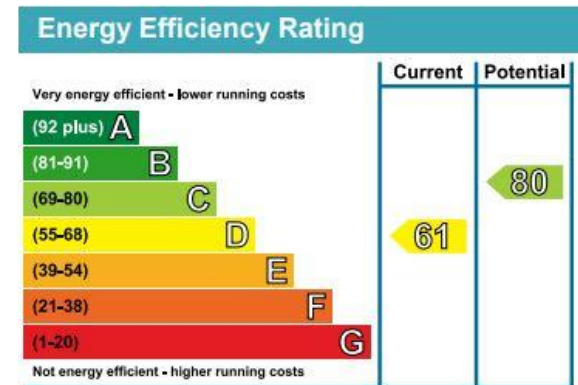
#### Directions

From the A272, turn north on the A32 towards Alton. Immediately after the Angel Hotel on the left-hand side, turn right at the crossroads into Sages Lane. Turn immediately left as directed towards Basing Barns.





Total area: approx. 227.9 sq. metres  
12 Basing Barns, Sages Lane, Privett, Alton



## WINCHESTER

BCM, The Old Dairy, Winchester Hill,  
Sutton Scotney, Winchester SO21 3NZ

T 01962 763 900 E [info@bcm.co.uk](mailto:info@bcm.co.uk)

## ISLE OF WIGHT

BCM, Red Barn, Cheeks Farm,  
Merstone Lane, Merstone, Isle of Wight PO30 3DE

01983 828 805 E [iow@bcm.co.uk](mailto:iow@bcm.co.uk)

## OXFORD

BCM, Sunrise Hill Yard, East Ilsley,  
Newbury, RG20 7LY

T 01865 817 105 E [oxford@bcm.co.uk](mailto:oxford@bcm.co.uk)



rural property services